

100 GHz ARRAYED WAVEGUIDE GRATING (AWG)



The Gemfire 100 Series of Arrayed Waveguide Gratings (AWGs) are cost-effective, high-performance DWDM mux/demux devices operating on 100GHz channel spacing at the C and L Band ITU grid. The PhotonIC™ planar-processed, silica-on-silicon chips use arrayed channel waveguides to separate or combine multiple wavelengths. These AWGs provide low insertion loss, excellent channel isolation, ease of fiber handling, and long-term reliability in a compact package. The product is offered with wideband or Gaussian passband options in multiple channel counts.

Applications include:

- Metro Area or Long-Haul DWDM Transmission
- Add-Drop Multiplexing
- Wavelength Selective Routing
- Optical Signal Processing

8 - 48 Channels

Low Insertion Loss & PDL

Low Crosstalk

Gaussian & Wide-Band Options

High Uniformity

**Internal Thermal Regulation
Electronics Option**

Compact Footprint

MSA-Compliant Option Available

Telcordia GR-1209/GR-1221 Qualified



For product sales, call 1-866-4GEMFIRE.

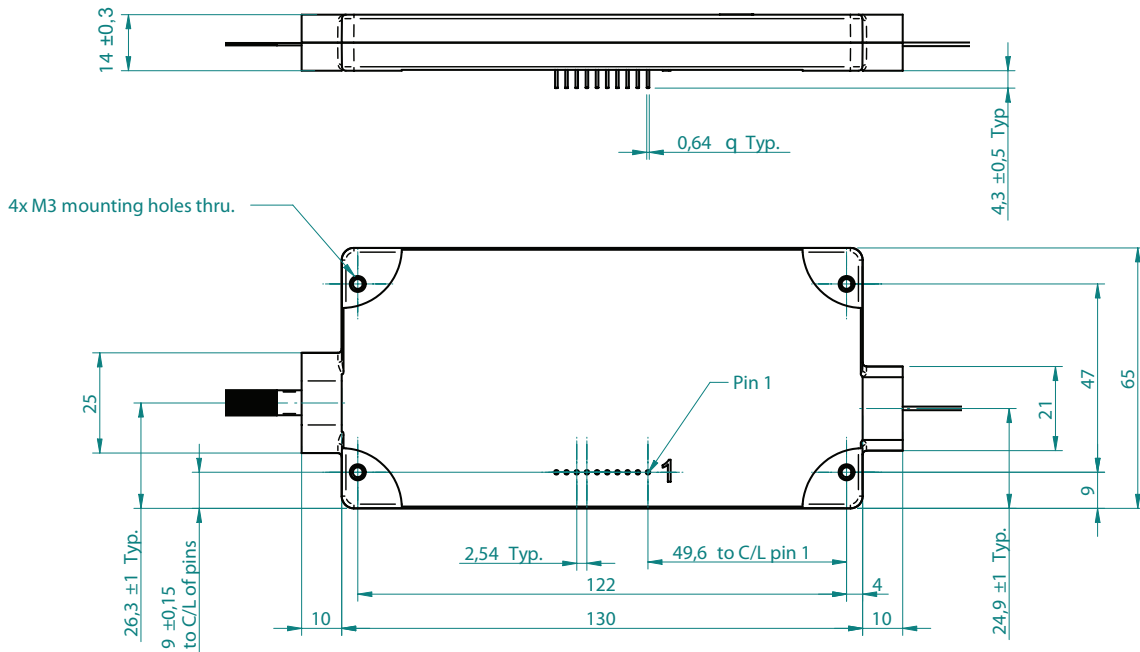
	GAUSSIAN	WIDE-BAND
Number of channels	8 - 48	8 - 48
Channel spacing	100GHz	100GHz
Clear window (specification passband)	25GHz	25GHz
Insertion loss (at ITU grid) ¹	2.5dB	4.5dB
Insertion loss (across clear window passband) ¹	4.0dB	5.0dB
Insertion loss uniformity (40 channel)	1.5dB	1.0dB
-1dB passband	0.2nm	0.4nm
Passband uniformity	1.5dB	0.4dB
Polarization dependent loss (at ITU grid)	0.2dB	0.2dB
Polarization dependent loss (across clear window)	0.5dB	0.4dB
Chromatic dispersion	<10ps/nm	<10ps/nm
Differential group delay	0.5ps	0.5ps
Adjacent channel crosstalk	-25dB	-26dB
Non-adjacent channel crosstalk	-30dB	-32dB
Maximum integrated crosstalk	-22dB	-23dB
Optical return loss	-40dB	-40dB
Dimensions ² (L x W x H)	130 x 65 x 14mm	130 x 65 x 14mm

Qualified to Telcordia GR-1209/GR-1221

All parameters are worst-case across clear window, temperature and polarization

1. Includes connector loss

2. More compact packaging available



Available with multiple connector types and optional internal control electronics.

Gemfire Corporation
 1220 Page Avenue
 Fremont, California 94538
 510-438-7500 or 1-866-4GEMFIRE
 www.gemfire.com

